

Uniform Shop

School uniform contributes to a child's sense of belonging and signifies pride in our school.

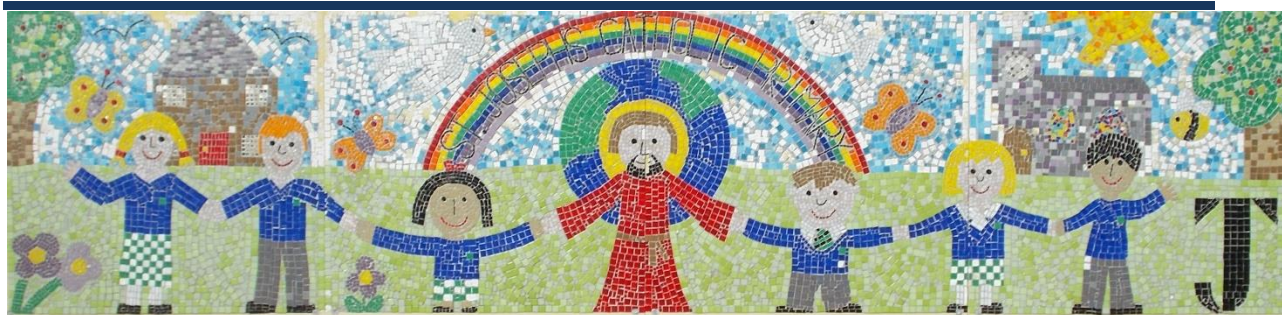
We have a simple school uniform of navy, grey, white and emerald green. All of our uniform items can be purchased from our **online school uniform shop**, run by our supplier Zip Promotions Ltd. The secure online shop is found at www.stjosephsuniformshop.co.uk

Non-logo uniforms items can also be bought from high street shops

Please see overleaf for details of our school uniform.

To maintain a neat and tidy school uniform, we ask that:

- Skirts should be an appropriate length and of a style which allows girls to sit comfortably on the floor.
 - Shoes should be flat, black and appropriate for school. Your child should wear shoes which he or she can manage to do up independently. Please do not send your child to school in shoes which prevent them from running in the playground.
 - Hair longer than shoulder length must be tied back at all times and hair bands/clips etc must be navy, black or brown.
 - Children should not wear make-up, coloured hair or nail varnish.
 - Children need a change of clothes and footwear for PE (for health and hygiene reasons) and a bag in which to keep the kit at school.
 - All school uniform and PE kit **MUST** be clearly named. Children can become upset as a result of lost clothing, so please help us by naming everything.
 - For health and safety reasons, children are not permitted to wear earrings or any other jewellery for PE. Your child's teacher will advise you when PE lessons take place so that earrings can be removed.
-



Uniform List – Academic Year 2018/2019

EYFS	Girls	Boys
Winter	White school polo shirt. Navy school skirt / school pinafore. St Joseph's navy blue jumper. Navy socks or tights. Black school shoes.	White school polo shirt. Grey school trousers. St Joseph's navy blue jumper. Grey socks. Black school shoes.
Summer	Green and white checked school dress. White socks. Black school shoes.	White school polo shirt. Grey shorts. Grey socks. Black school shoes.
KS1	Girls	Boys
Winter	White school shirt. Navy/emerald school tie. Navy school skirt / school pinafore. St Joseph's navy blue jumper. Navy socks or tights. Black school shoes.	White school shirt. Navy/emerald school tie. Grey school trousers. St Joseph's navy blue jumper. Grey socks. Black school shoes.
Summer	Green and white checked school dress. White socks. Black school shoes.	White school short sleeve shirt. Navy/emerald school tie. Grey shorts. Grey socks. Black school shoes.
KS2	Girls	Boys
Winter	White school shirt. Navy/emerald school tie. Navy school skirt. St Joseph's navy blue jumper. Navy socks or tights. Black school shoes.	White school shirt. Navy/emerald school tie. Grey school trousers. St Joseph's navy blue jumper. Grey socks. Black school shoes.
Summer	Green and white checked school dress. White socks. Black school shoes.	White school short sleeve shirt. Navy/emerald school tie. Grey shorts. Grey socks. Black school shoes.
	PE Kit	Bags & Sundries
	St Joseph's Drawstring PE bag. St Joseph's house coloured polo shirt. Navy shorts or jogging bottoms. White socks EYFS & KS1: Black plimsolls. KS2: Trainers.	EYFS & KS1: St Joseph's book bag. KS2: St Joseph's large rucksack. St Joseph's sun hat